

FLY II 3D PU SYSTEM





REAL







REAL





FLY II 3D PU + WOOD

REAL

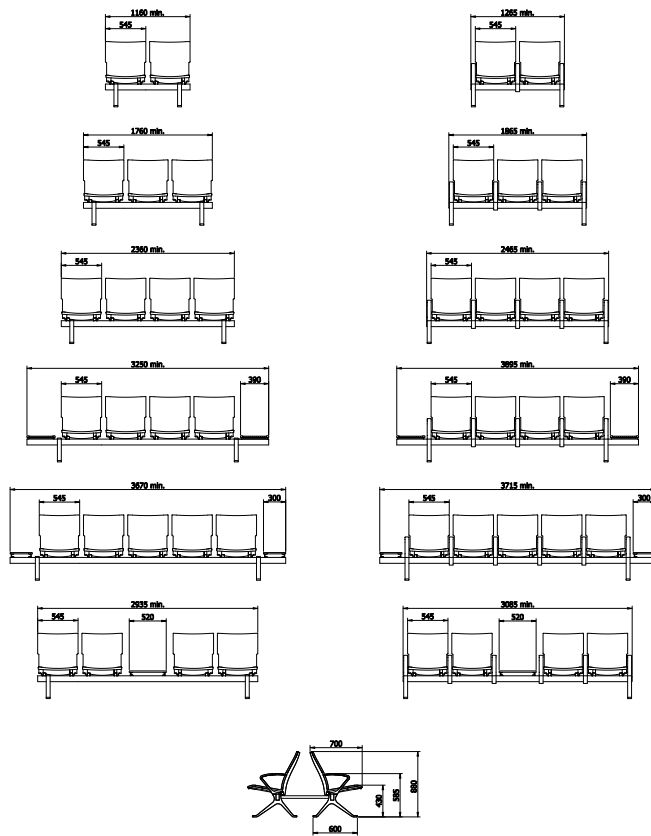




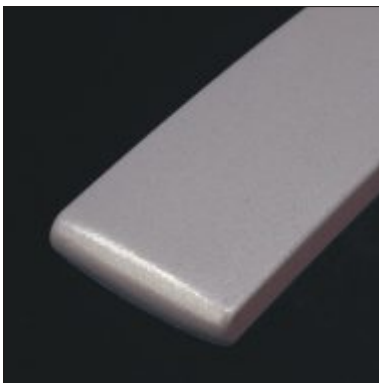
FULL LAZY CHAIR

HALF LAZY CHAIR





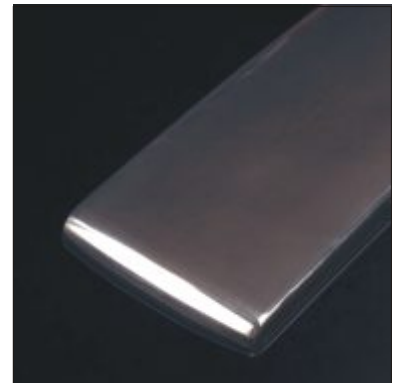
ALUMINIUM FINISHING



POWDER COATED

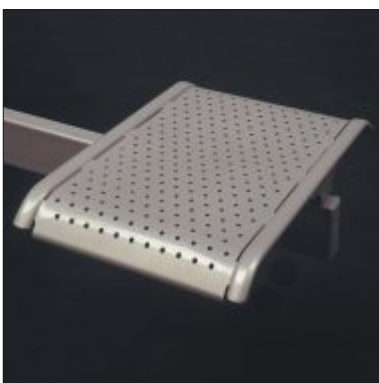


BRUSHED



POLISHED

TABLES



STEEL



HPL OR BLACK PU



HPL WOOD

REAL works with ISO 9001: 2008 Quality Management System issued by TUV RHEINLAND. All our products are certified in terms of durability, stability, inflammability, hygiene and ergonomics. All seats have positive opinion for ergonomics from The Medical Institute.

We connect our seating with line and back-to-back connectors.